

Infrastructure and Connectivity

A successful village style community must have the fundamentals of Infrastructure and Connectivity in place to function.

In the early 21st century the fundamentals are:-

To be able to enjoy an acceptable standard of living with the essential services being able to be accessed. To be able to move around, both locally and further afield, easily and safely by a variety of means. To be able to communicate effectively and to receive the basic services we have come to rely on

Infrastructure

It is generally regarded that the pavements and footways are not good with very poor surfaces, obstructions and, in places, are dangerously narrow forcing pedestrians very close to the main and busy road. Most, but by no means all, footways adjacent to the main road have dropped kerbs where side entrances join the main road thus making it easier for those in mobility scooters and pushing baby buggies etc. There are no pavements with “pavement dimples” at road intersections only at the two traffic island crossing points and the Pelican crossing near to the Jubilee Hall.

Streetlighting is adequate and probably strikes a good balance between providing lit and thus safer roads and pavements with high energy consumption and light pollution.

There are 4 post-boxes within the Parish. 3 on the main road’ (Parsons Lane junction, opposite Burcott Lane junction, near to Gibb Lane junction) and one on Broughton lane, south of the canal bridge. These boxes are collected by the Royal Mail 6 days a week in the early part of the morning. They are all at the far end of the parish from Aylesbury but addresses near to Aylesbury have the use of a post box on the corner of the A418 and Coppice Way as well as the post office in Dunsham Lane off Elmhurst Road. This latter’s facilities has later and more frequent collections.

Connectivity

The basic services which any household or small business in Bierton with Broughton would consider to be essential are: -

Post, daily (Mon – Sat) delivery and access (<1km) to a post box with at least daily collection. See also “Infrastructure”, above.

Electricity, single phase – Any small business using virtually any kind of machinery would require a 3-phase supply.

Water, potable water in adequate quantity and sufficient pressure (eg to effectively supply a shower at 2nd floor/loft conversion level).

Drainage, of both surface water and sewage.

Telephone, a basic landline is the absolute minimum requirement.

Digital (freeview) TV

The above are the “absolutely must haves” and the village is adequately provided with all these.

Gas, to efficiently power a modern heating system. This would be considered a “highly desirable” service by most and 15% - 25% of homes are currently not provided with mains gas. See appendix.

The up and coming essentials which both business and homes require are:-

Mobile phone connectivity (voice and SMS signal, indoors and out).

Despite the coverage maps supplied by the 4 providers (EE, O2, Three and Vodafone, everyone else “piggybacks” from them), see attached, coverage within the parish is unreliable and can best be described as “adequate outside” and “poor indoors”.

Note: The service providers information is not borne out by practical experience.

See maps attached as appendices.

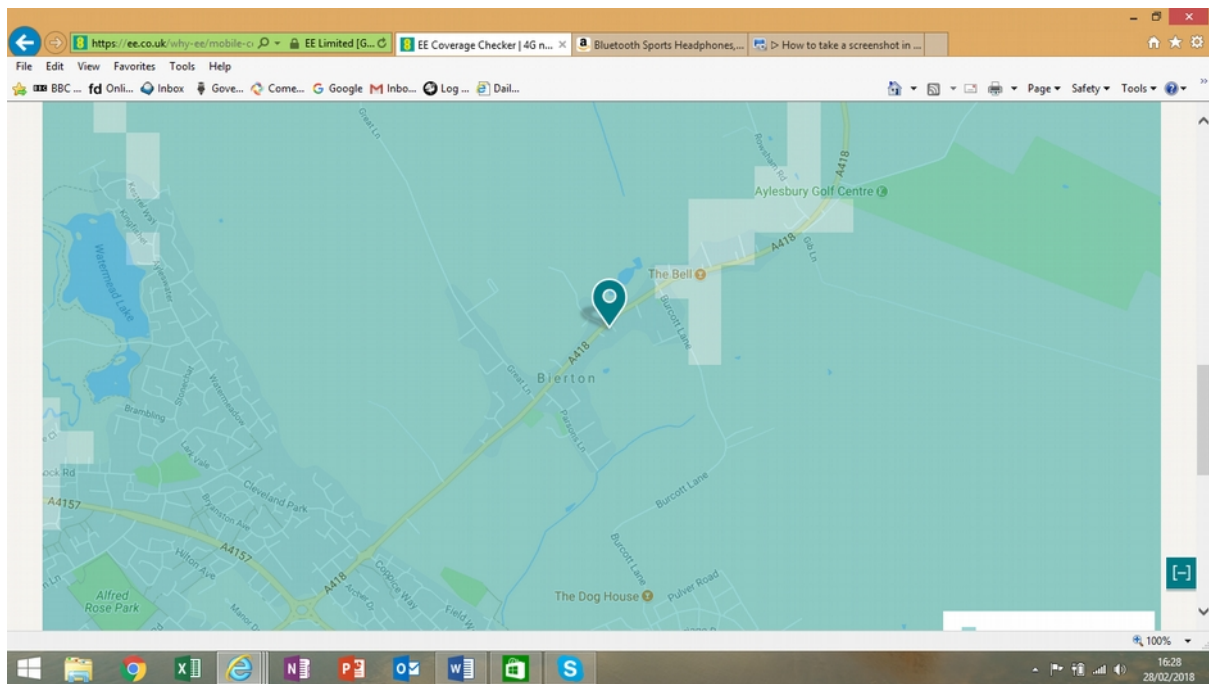
Broadband Acceptable speeds of 30/40 MBS can be achieved in most areas close to the main road but as soon as properties are away from the main A418 artery then speeds drop off and optical fibre is not available.

Cable TV is not available in the parish

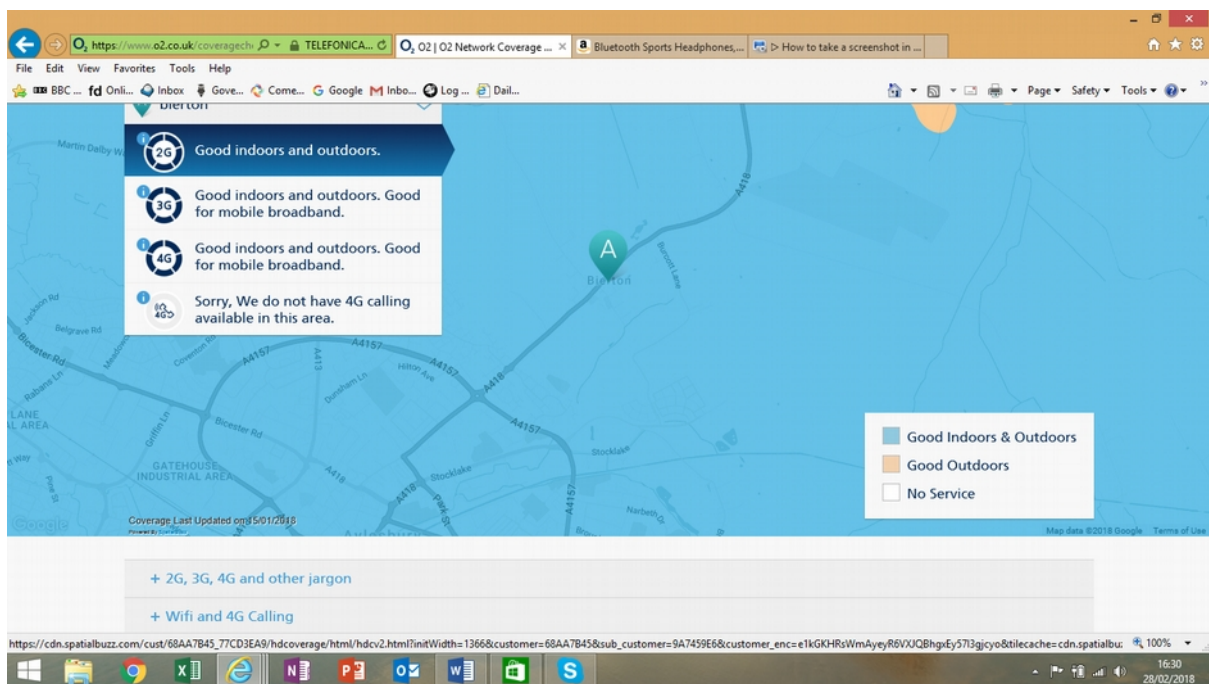
4G and shortly 5G 4G is available throughout on all networks but is not reliable with poor/adequate signal strength. When 5G begins to be available, 2020 is talked about as being likely in major cities across the UK, we need to make sure that we are not too far from the front of the queue to ensure the economic future of the parish.

Appendices

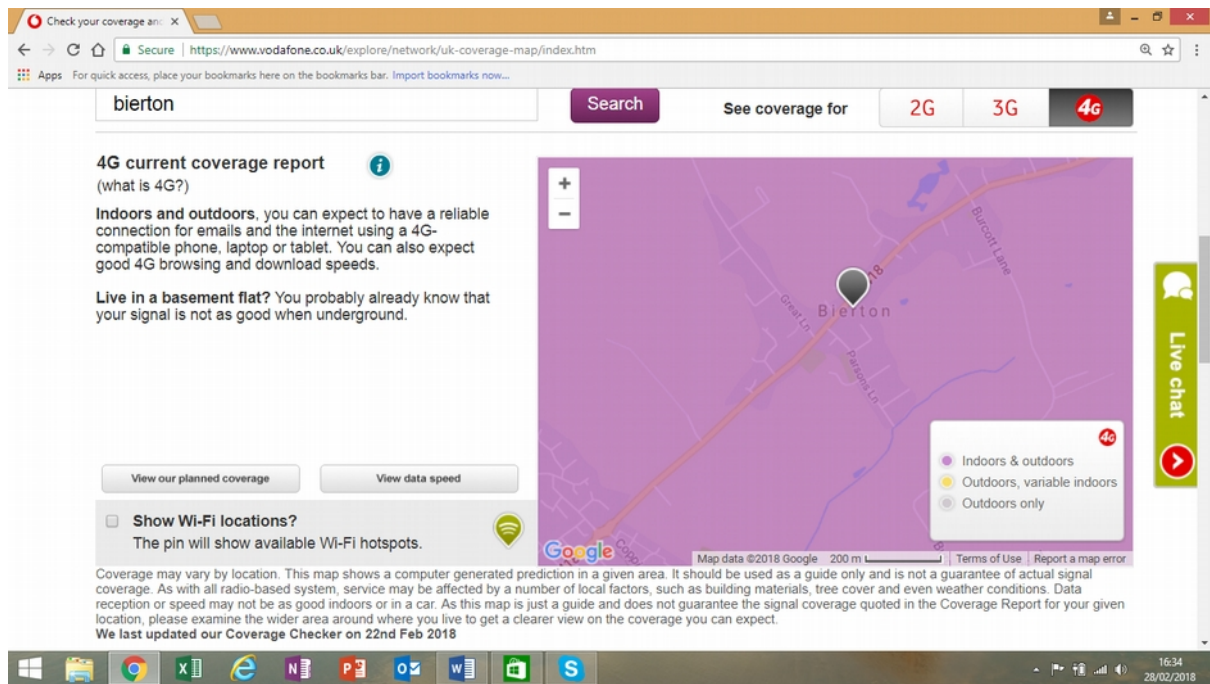
EE coverage map – their website



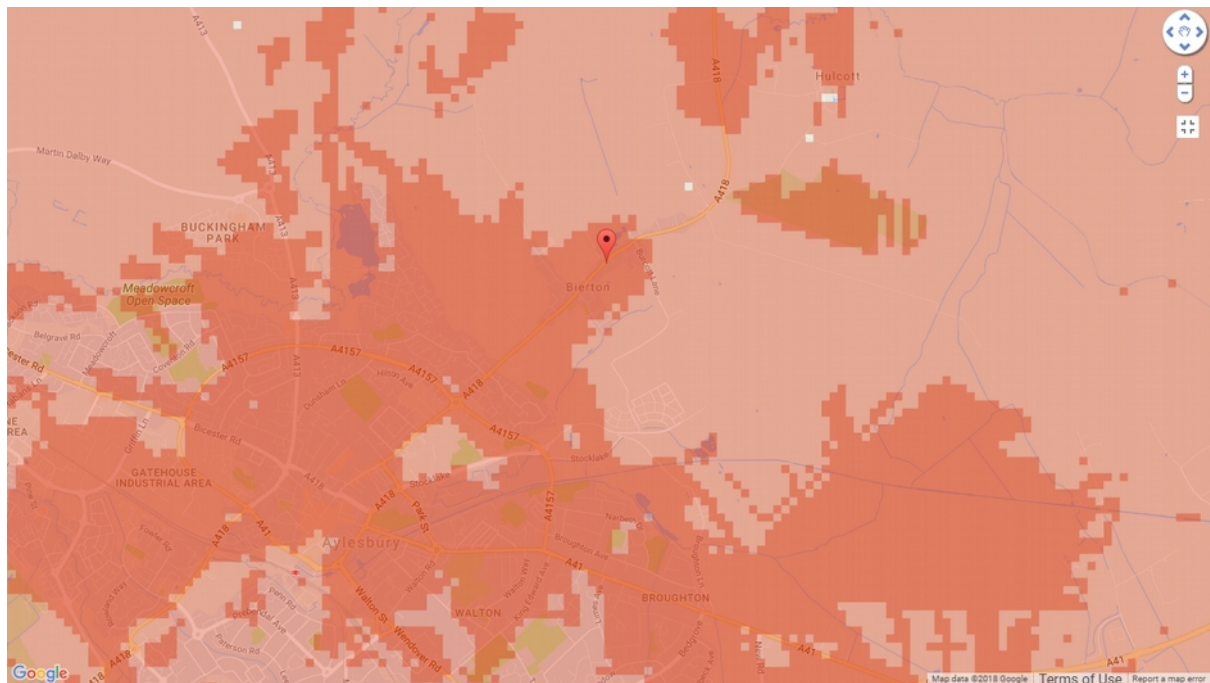
O2 coverage map – their website



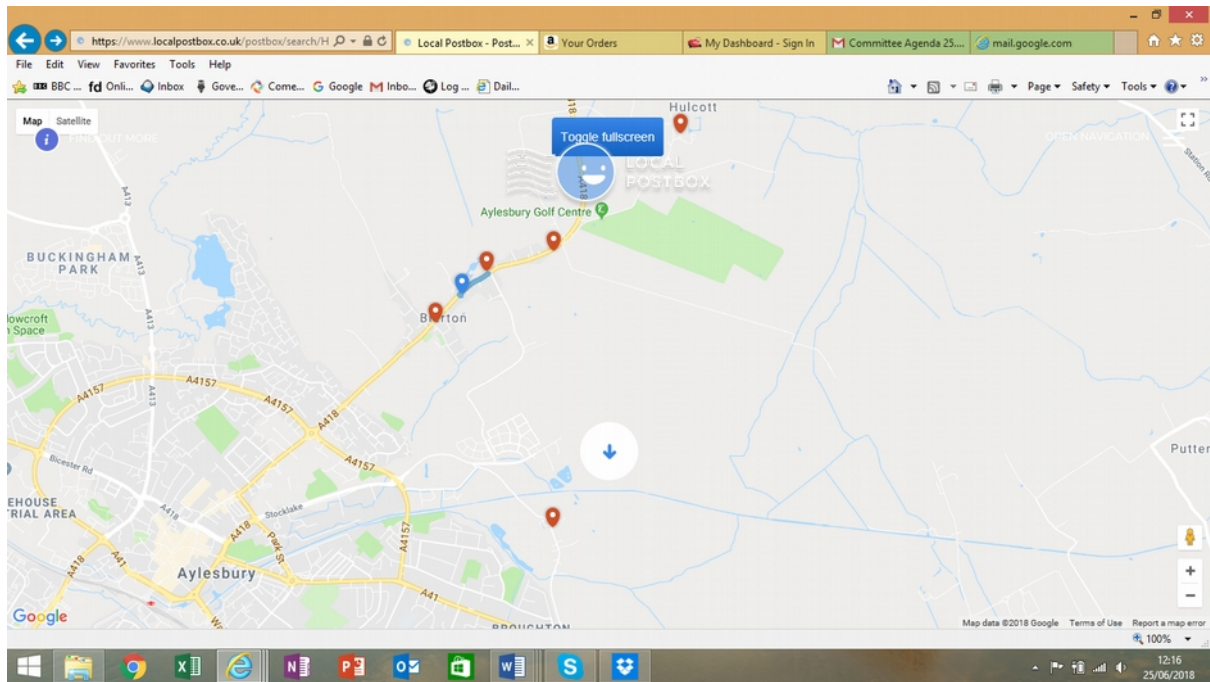
Vodafone coverage map – their website



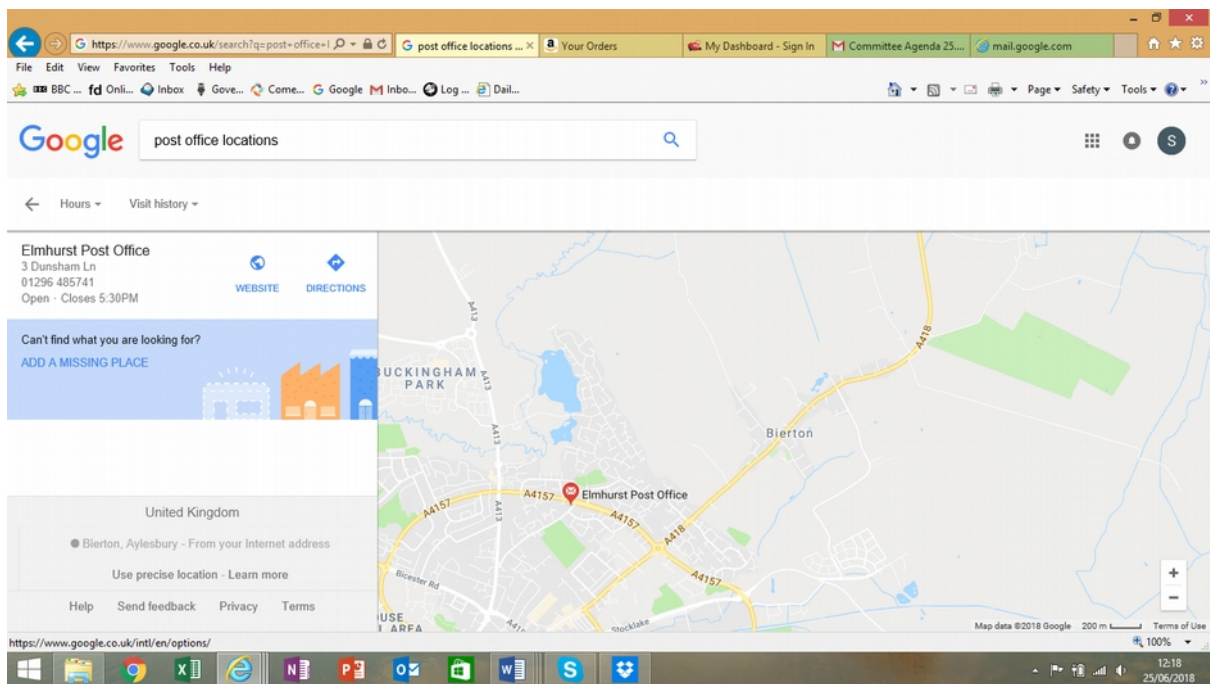
Three coverage map – their website



Post box locations – marked with red pinpoint



Post Office Location



Mains Gas availability

