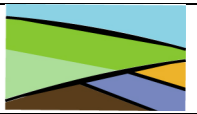


Bierton with Broughton Neighbourhood Plan

Policies Relating to Landscape Assets, Green Spaces and Green Infrastructure

APPENDICES

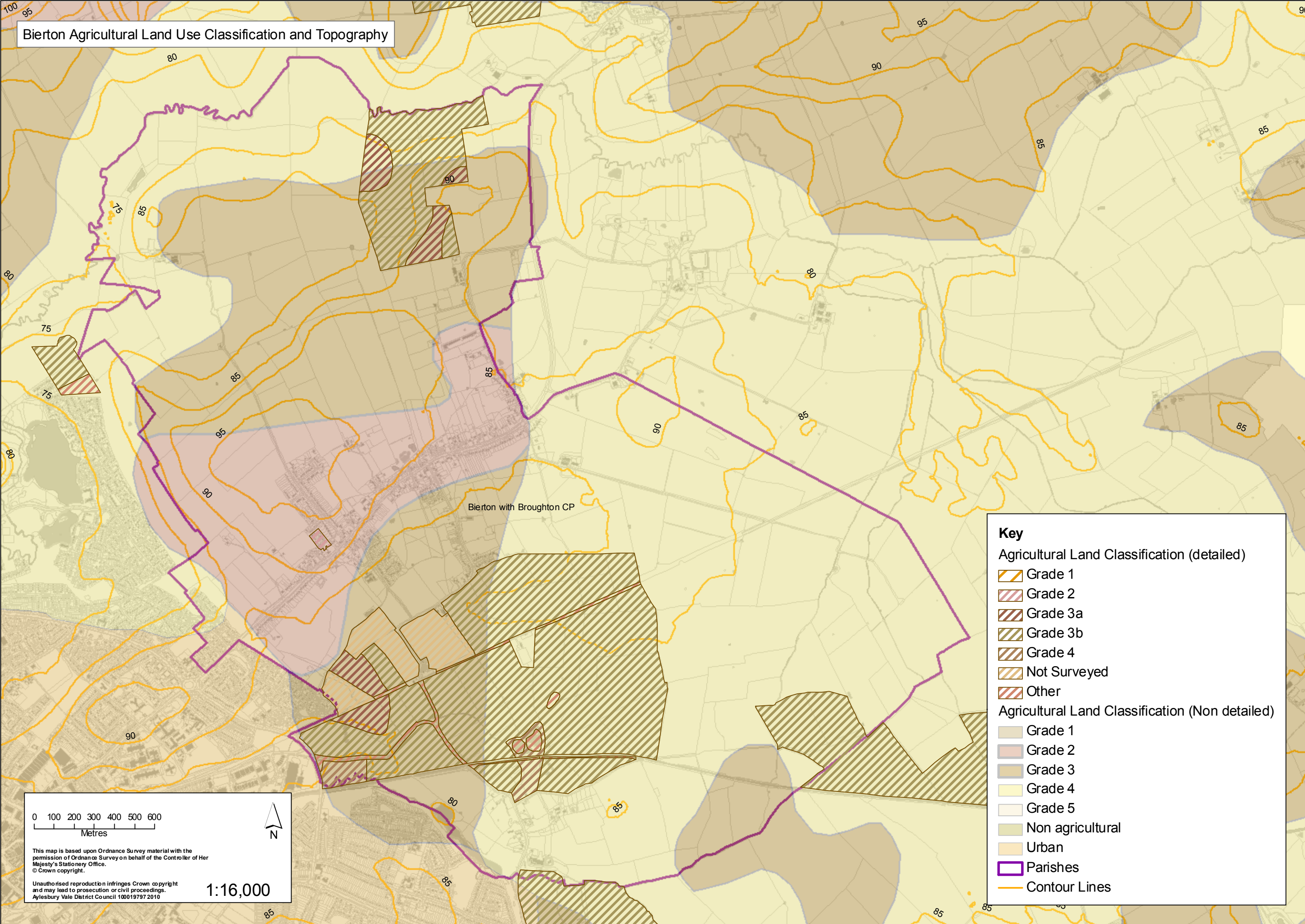
Appendix 1	Bierton with Broughton Agricultural Land Classification & Topography (from Bierton with Broughton Fact Pack, October 2011)
Appendix 2	Bierton with Broughton Environmental Constraints (from Bierton with Broughton Fact Pack, October 2011)
Appendix 3	Bierton with Broughton Historic Constraints (from Bierton with Broughton Fact Pack, October 2011)
Appendix 4	Bierton with Broughton Public Rights of Way and Transport Infrastructure (from Bierton with Broughton Fact Pack, October 2011)
Appendix 5	Detailed Green Space Assets – Plans 5 to 14 (Important Local Green Spaces 1 to 26 - Refer to Schedule of Identified Landscape and Green Infrastructure Assets Table 1 above)
Appendix 6	Detailed Landscape Analysis and Indicative Proposals Plan 15 - Cross Section Sketch; Existing and Proposed Green Infrastructure Plan 16 - Sketch Analysis of Land Use, Infrastructure and Green Infrastructure with Indicative Green Infrastructure Proposals Plan 17 - Sketch Analysis of Land Use, Infrastructure and Green Infrastructure with Indicative Green Infrastructure Proposals Plan 18 – Plan showing Existing / Approved Green Infrastructure and Indicative Proposed Zones of Non-Coalescence
Appendix 7	Viewpoint Photographs 1 – 39
Appendix 8	Plan 4 Bierton with Broughton Parish – Green Infrastructure Assets with Public Rights of Way and Viewpoints



APPENDIX 1

**Bierton with Broughton Agricultural Land Classification & Topography Maps – Extract from the The Vale of Aylesbury Plan Bierton Fact Pack, October 2011**  
For more details refer to [https://www.aylesburyvaledc.gov.uk/sites/default/files/page\\_downloads/Bierton01-05-2013.pdf](https://www.aylesburyvaledc.gov.uk/sites/default/files/page_downloads/Bierton01-05-2013.pdf)

Bierton Agricultural Land Use Classification and Topography



**Key**

**Agricultural Land Classification (detailed)**

- Grade 1
- Grade 2
- Grade 3a
- Grade 3b
- Grade 4
- Not Surveyed
- Other

**Agricultural Land Classification (Non detailed)**

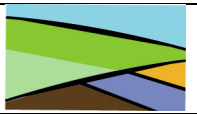
- Grade 1
- Grade 2
- Grade 3
- Grade 4
- Grade 5
- Non agricultural
- Urban
- Parishes
- Contour Lines

0 100 200 300 400 500 600  
Metres

This map is based upon Ordnance Survey material with the permission of Ordnance Survey on behalf of the Controller of Her Majesty's Stationary Office.  
© Crown copyright.

Unauthorised reproduction infringes Crown copyright and may lead to prosecution or civil proceedings.  
Aylesbury Vale District Council 100019797 2010

1:16,000



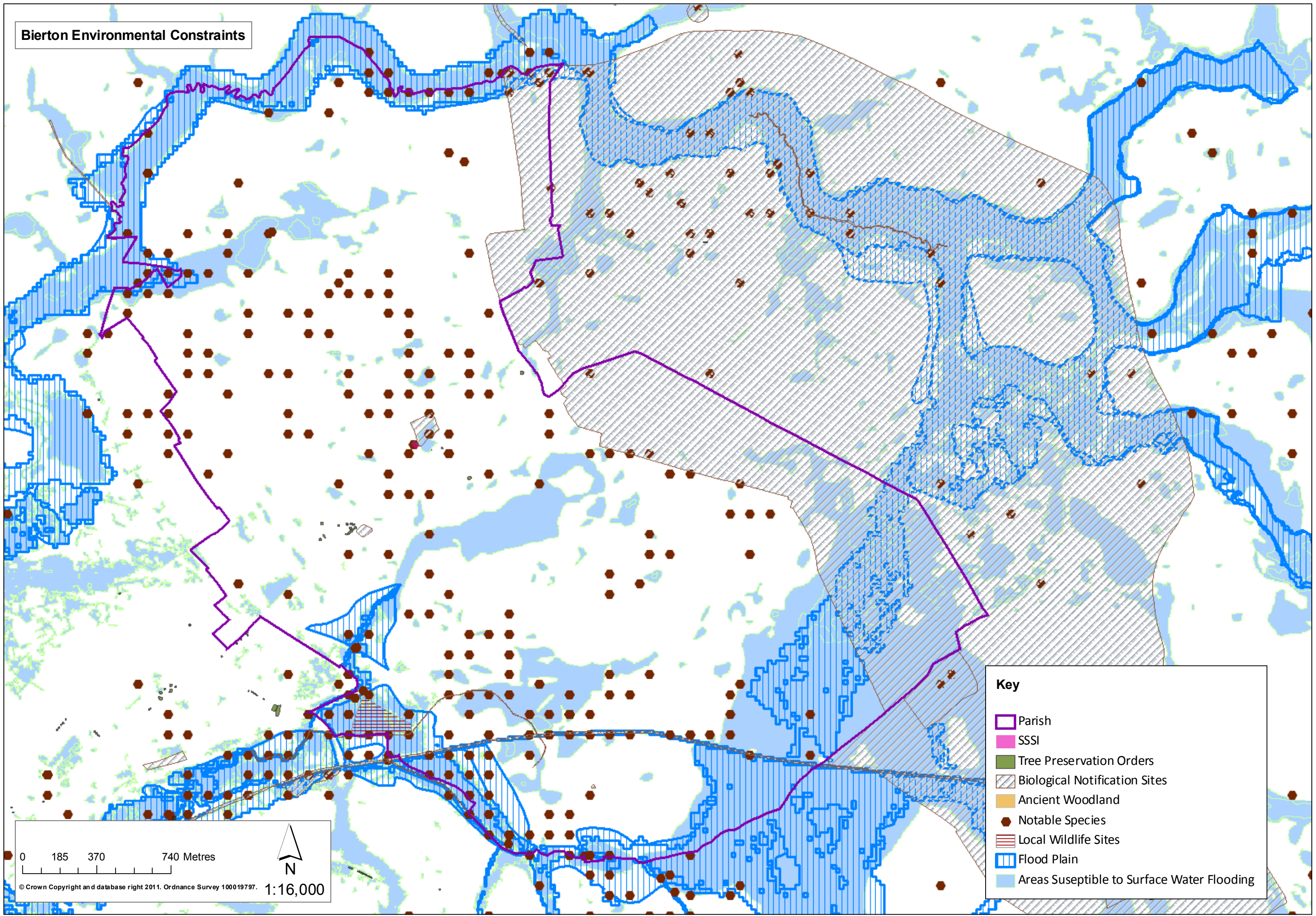
APPENDIX 2

**Bierton with Broughton Environmental Constraints – Extract from the The Vale of Aylesbury Plan Bierton Fact Pack, October 2011**

For more details refer to [https://www.aylesburyvaldc.gov.uk/sites/default/files/page\\_downloads/Bierton01-05-2013.pdf](https://www.aylesburyvaldc.gov.uk/sites/default/files/page_downloads/Bierton01-05-2013.pdf)

*(Notable Species mentioned include predominantly Black Poplar)*

**Bierton Environmental Constraints**



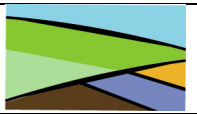
**Key**

- Parish
- SSSI
- Tree Preservation Orders
- Biological Notification Sites
- Ancient Woodland
- Notable Species
- Local Wildlife Sites
- Flood Plain
- Areas Suseptible to Surface Water Flooding

0 185 370 740 Metres

N

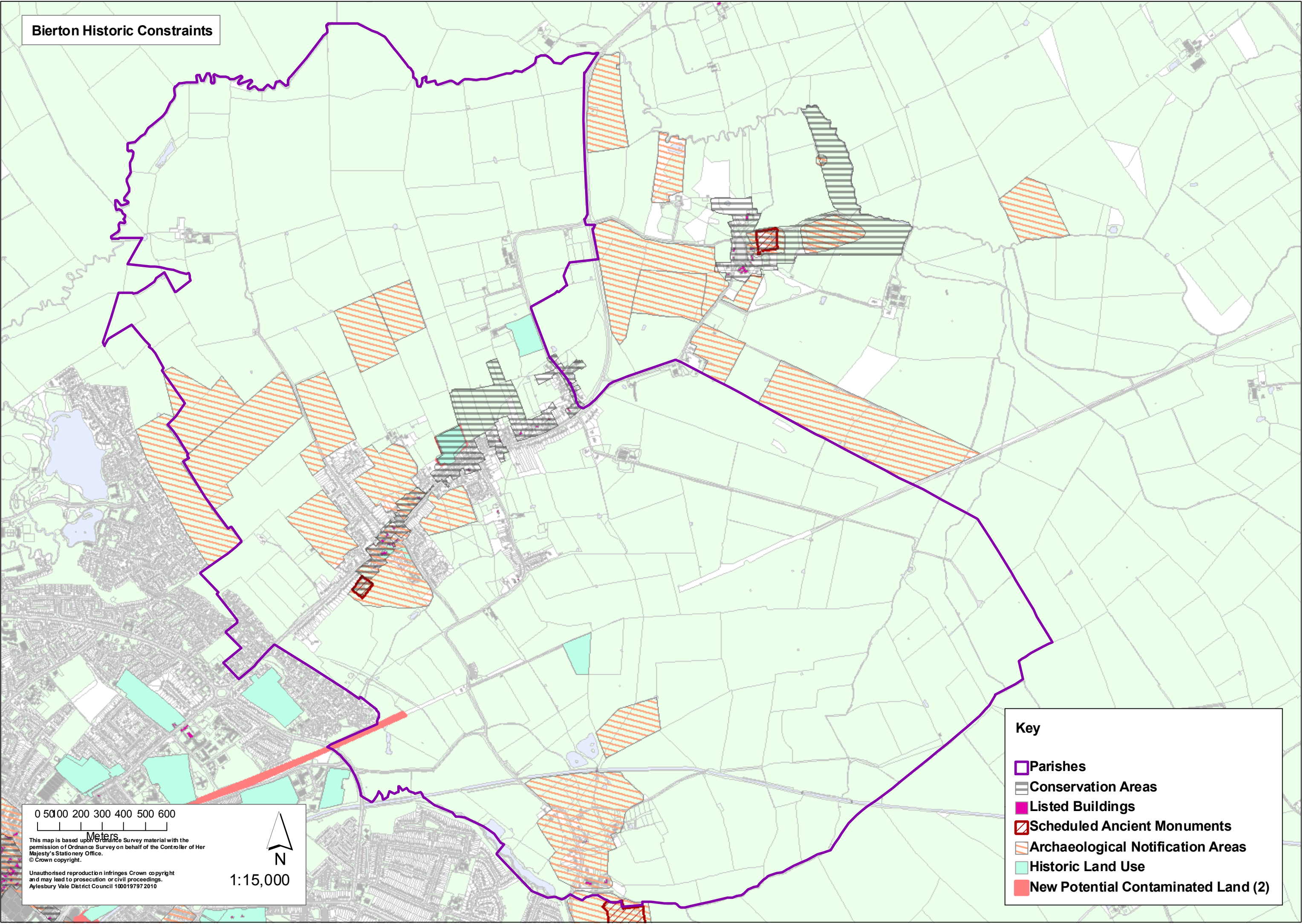
© Crown Copyright and database right 2011. Ordnance Survey 100019797. 1:16,000



APPENDIX 3

**Bierton with Broughton Historic Constraints – Extract from the The Vale of Aylesbury Plan Bierton Fact Pack, October 2011**  
For more details refer to [https://www.aylesburyvaledc.gov.uk/sites/default/files/page\\_downloads/Bierton01-05-2013.pdf](https://www.aylesburyvaledc.gov.uk/sites/default/files/page_downloads/Bierton01-05-2013.pdf)

**Bierton Historic Constraints**



0 50 100 200 300 400 500 600  
Meters

This map is based upon Ordnance Survey material with the permission of Ordnance Survey on behalf of the Controller of Her Majesty's Stationery Office.  
© Crown copyright.  
Unauthorised reproduction infringes Crown copyright and may lead to prosecution or civil proceedings.  
Aylesbury Vale District Council 100019797 2010

N  
1:15,000

**Key**

- Parishes
- Conservation Areas
- Listed Buildings
- Scheduled Ancient Monuments
- Archaeological Notification Areas
- Historic Land Use
- New Potential Contaminated Land (2)

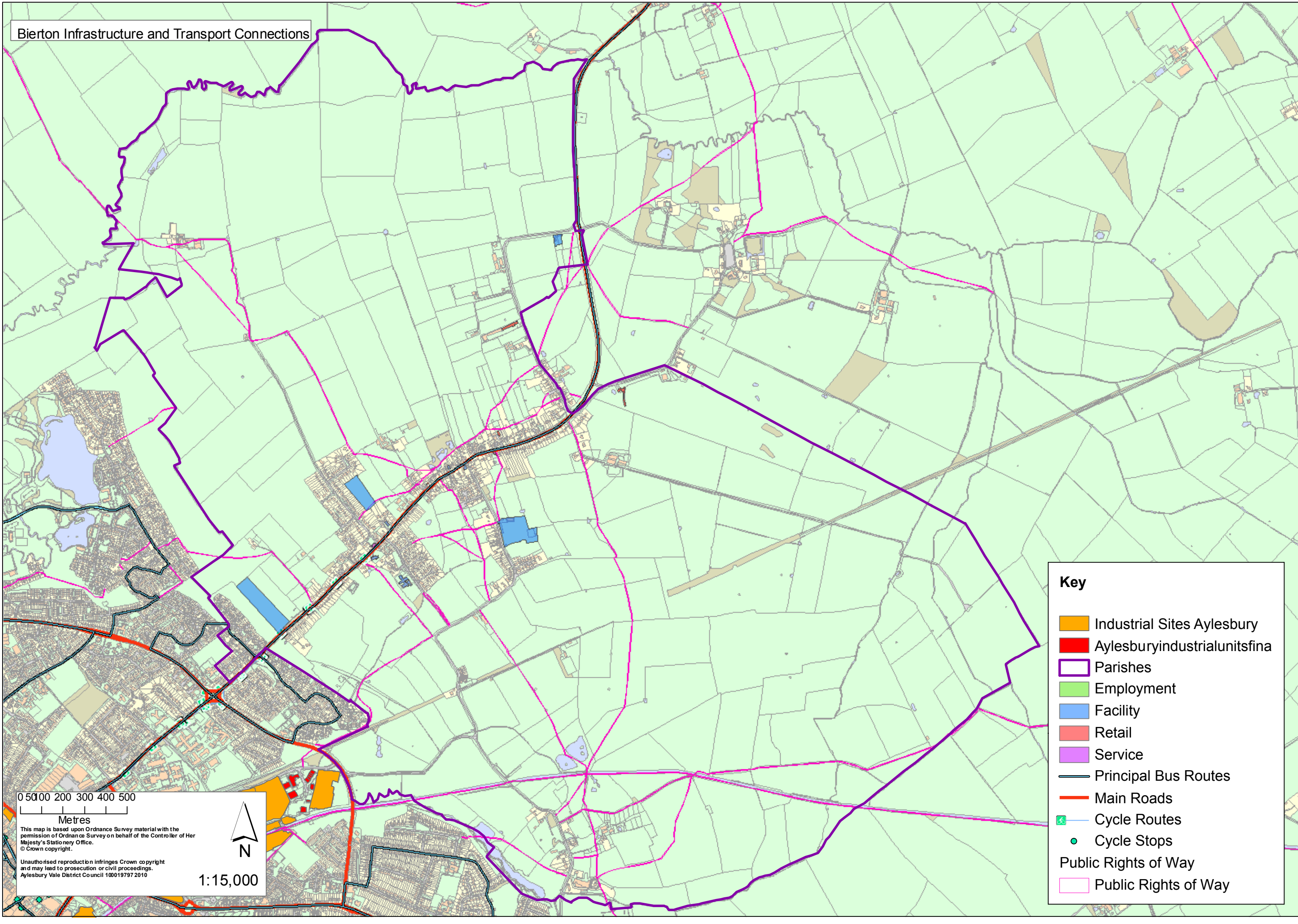


APPENDIX 4

**Bierton with Broughton Public Rights of Way & Transport Infrastructure – Extract from the The Vale of Aylesbury Plan Bierton Fact Pack, October 2011**

For more details refer to [https://www.aylesburyvaledc.gov.uk/sites/default/files/page\\_downloads/Bierton01-05-2013.pdf](https://www.aylesburyvaledc.gov.uk/sites/default/files/page_downloads/Bierton01-05-2013.pdf)

# Bierton Infrastructure and Transport Connections



**Key**

Industrial Sites Aylesbury

Aylesbury industrial units fina

Parishes

Employment

Facility

Retail

Service

Principal Bus Routes

Main Roads

Cycle Routes

Cycle Stops

Public Rights of Way

Public Rights of Way

0 50 100 200 300 400 500

Metres

This map is based upon Ordnance Survey material with the permission of Ordnance Survey on behalf of the Controller of Her Majesty's Stationary Office.  
© Crown copyright.

Unauthorised reproduction infringes Crown copyright and may lead to prosecution or civil proceedings.  
Aylesbury Vale District Council 100019797 2010

N

1:15,000